

easyApp Operating instructions

Each system comes with a programming card. This programming card must not get lost.

In case of an initial order, the cylinders are delivered with the programming card already "learned" at the factory. You can proceed directly to "Programming the user media".

A maximum of 250 users are possible per cylinder.

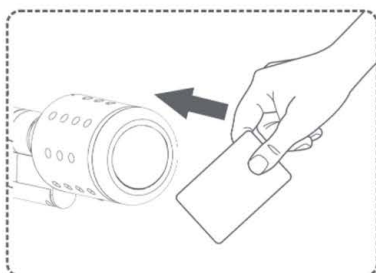
In select cases, the cylinders are delivered in the so-called construction mode.

Construction mode

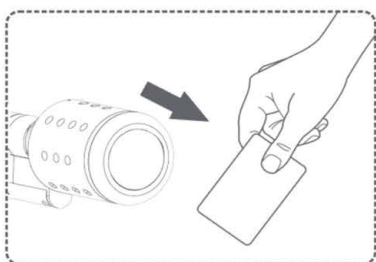
The cylinders can be opened with any MIFARE transponder.

Once the cylinder has been installed in the door, the door can be opened as follows:

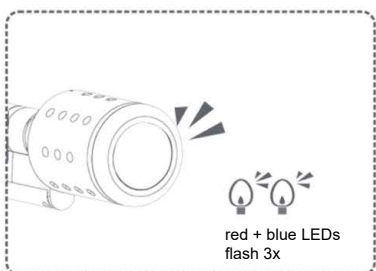
- 1 Hold a medium to the electronic knob of the cylinder.



- 2 Remove the card.



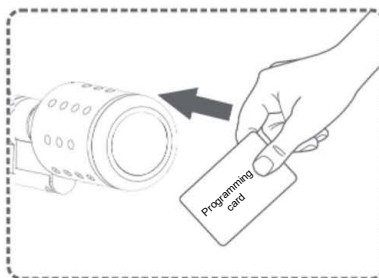
- 3 An acoustic signal is sounded and the LEDs blink red and blue three times. The coupler is actuated.



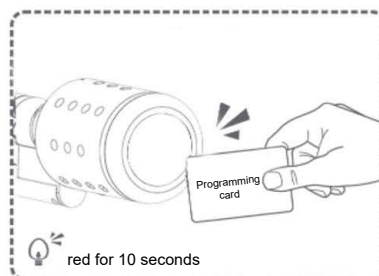
- 4 The cylinder is uncoupled again after 9 seconds.

Teaching the programming card

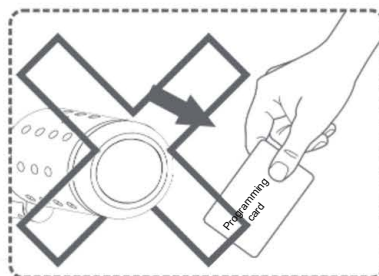
- 1 Hold the supplied programming card for ten seconds as close as possible to in front of the cylinder's reader.



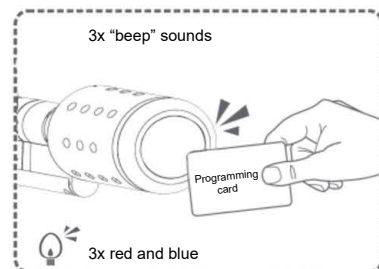
- 2 An acoustic signal is sounded and the red LEDs blink continuously for 10 seconds.



- 3 During this period, the programming card must not be removed from the reader.



- 4 As soon as the programming card has been "learned", 3 acoustic signals are sounded and the red and blue LEDs blink 3 times.



- 5 If the programming card is removed within the aforementioned 10 seconds, the "learning process" fails.

- 6 In this case, please repeat steps 1 to 4.

Instructions for the programming card

1. Subsequently delivered cylinders always must "learn" the programming card belonging to the system.
2. The programming card serves exclusively for the authorizing and deleting of user media as well as for communication with the administrator smartphone. It cannot open doors.
3. Multiple cylinders with one programming card: You can use one programming card for multiple cylinders. The "learning" of the programming card is identical for each cylinder. Make sure that the cylinder "learns" the correct programming card.
4. The programming card cannot be deleted from the cylinder. In that case, the cylinder can only be reset at the factory.
5. Before the smartphone can be connected, the programming card must be "learned" first.
6. The programming card must always be used to exchange information and data.

General instructions

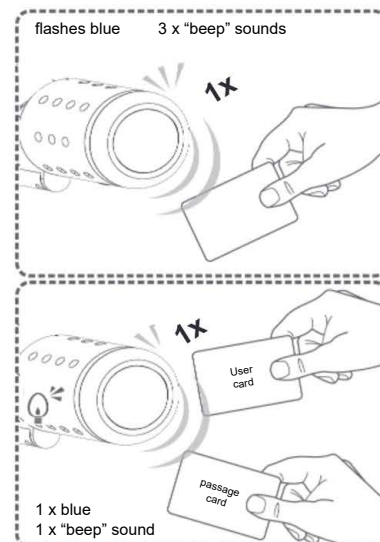
Both the passage card as well as the user media must be authorized by means of the programming card prior to utilisation.

Note:

NFC modules, such as smartphones with NFC interface, NFC tags, NFC cards, etc. are not permitted as a replacement for Mifare Classic transponders.

Programming of the user media

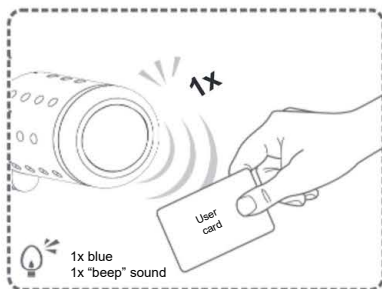
For the programming of a new user medium or of a passage card (optionally), the programming card must be held in front of the cylinder, and then the user medium. In case the user medium is the easyApp, the cylinder must be operated once via the open button, instead. The first smartphone logged in automatically becomes the administrator phone.



As soon as the maximum number of users has been programmed, 10 short acoustic signals are sounded and the LEDs blink red and blue 3 times.

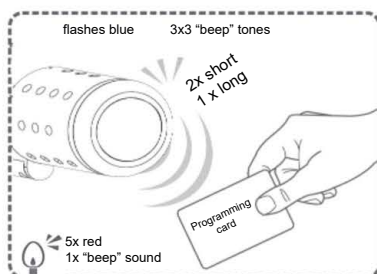
Engaging the cylinder

- 1 Engaging the cylinder: hold the user medium 1 time in front of the cylinder or actuate the open button in the app. The cylinder engages for the configured period of release (pre-set: 6 seconds).



Deleting lost user media

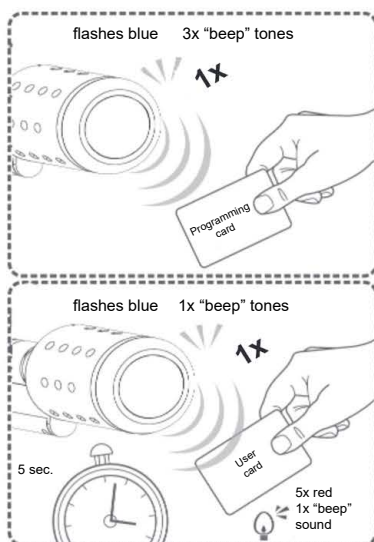
- 1 Deleting all users: hold the programming card in front of the cylinder 2 times briefly and 1 time.



- 2 Except for the passage card and the administrator phone, all locking authorizations, including the authorized smartphones, are deleted.

Deleting existing user media

- 1 To delete an existing user card, hold the programming card once and then hold the user card in front of the cylinder once for five seconds.

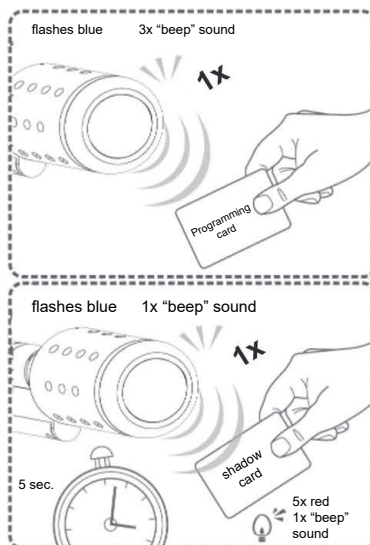


Locking authorizations can be easily managed with the administrator phone.

Optional application

Deleting with shadow card

- 1 To delete a user medium that was lost, hold the programming card 1 time in front of the cylinder and subsequently the shadow card belonging to the lost user medium 1 time for 5 seconds.

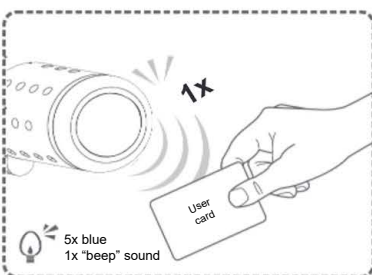
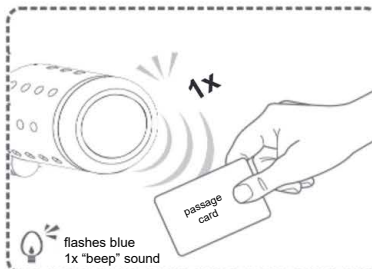


- 2 In case of loss of the shadow card, please contact your specialised dealer.

Passage card

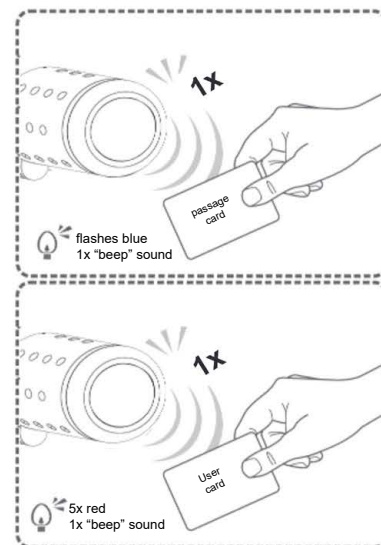
- 1 Activating a user medium with passage-mode-authorization:

Hold the passage card and the user card in front of the cylinder once in each case.



Deactivating a user medium with passage authorization:

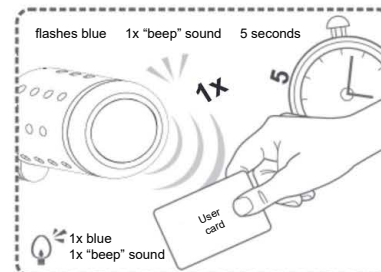
Hold the passage card and the user card in front of the cylinder once each.



- 3 In case of loss of the passage card, please contact your specialised dealer.

Passage mode

- 1 To activate the passage mode, the user medium must be held in front of the cylinder for 5 seconds or the open button in the app must be pressed for 5 seconds.



- 2 To deactivate the passage mode, the user medium must be held in front of the cylinder for 5 seconds or the open button in the app must be pressed for 5 seconds.

